

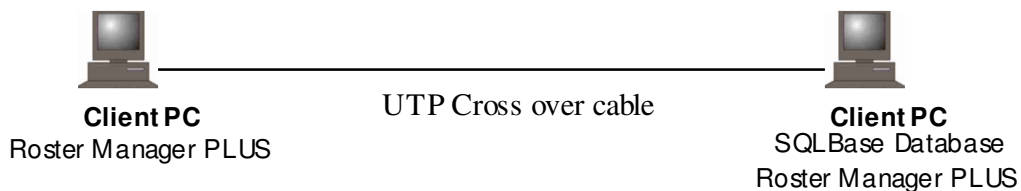
## System Requirements

Logosoft systems are implemented using a client server architecture which supports all current versions of Microsoft Windows (i.e. 9x, NT, ME, 2000, 2003, and XP). Connectivity between client and server requires the use of TCP/IP.

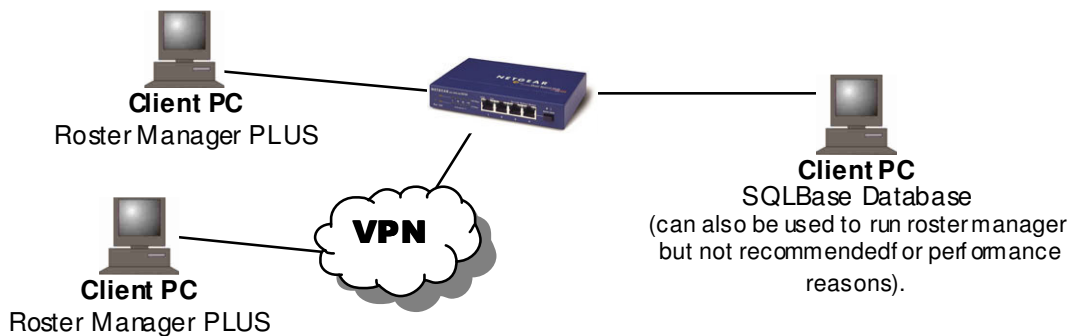
Wide area links may be achieved using virtual private networking connections or, in the case of Windows NT, 2000, 2003 Server, by using standard remote access services over dial-up or ISDN connections.

Client PCs should be configured with processors and memory conforming to Microsoft recommendations for the installed operating system. Servers (or client PCs also acting as database servers) should also follow Microsoft recommendations with an additional 64Mb memory being provided for each active database user. It is recommended the Call Manager PCs be configured with a minimum of 512Mb of RAM. Disk requirements are less than 100Mb for client PCs and, except for customers with 1000+ security officers, less than 5Gb for database servers.

### 2 User



### Peer Network



### Server Network

